



**Professional Framing Tapes**





## Table of Contents

<b>Pro® Stitchery Tape</b> <i>Double Coated Mounting Tape</i> .....	<b>Page 1</b>
<b>Pro® Fillet Tape</b> <i>Double Coated Mounting Tape</i> .....	<b>Page 1</b>
<b>Pro® Felt Tape</b> <i>Protection Tape</i> .....	<b>Page 1</b>
<b>Pro® 154 ATG</b> <i>Double Coated Mounting Tape</i> .....	<b>Page 2</b>
<b>Pro® 156 ATG</b> <i>Double Coated Mounting Tape</i> .....	<b>Page 2</b>
<b>Pro® 410 ATG</b> <i>Double Coated Mounting Tape</i> .....	<b>Page 2</b>
<b>Pro® ATG HD Dispenser</b> .....	<b>Page 2</b>
<b>Pro® 155</b> <i>Double Coated Mounting Tape</i> .....	<b>Page 3</b>
<b>Pro® 156</b> <i>Double Coated Mounting Tape</i> .....	<b>Page 3</b>
<b>Pro® 410</b> <i>Double Coated Mounting Tape</i> .....	<b>Page 3</b>
<b>UGlu®</b> <i>Double Coated Mounting Tape</i> .....	<b>Page 4 &amp; 5</b>
<b>Pro® 5050C</b> <i>Double Coated Extreme High Bond Tape</i> .....	<b>Page 6</b>
<b>Pro® 5100C</b> <i>Double Coated Extreme High Bond Tape</i> .....	<b>Page 6</b>
<b>Pro® 5110G</b> <i>Double Coated Extreme High Bond Tape</i> .....	<b>Page 6</b>
<b>Pro® 5110W</b> <i>Double Coated Extreme High Bond Tape</i> .....	<b>Page 6</b>
<b>Artist Tape</b> <i>Flatback Paper Tape</i> .....	<b>Page 7</b>
<b>Pro® Drafting</b> <i>Medium Tack Masking Tape</i> .....	<b>Page 7</b>
<b>Pro® Framers</b> <i>Polyethylene Coated Cloth Tape</i> .....	<b>Page 7</b>
<b>Premium Black Masking</b> <i>pH Neutral Masking Tape</i> .....	<b>Page 7</b>
<b>Pro® 795</b> <i>General Purpose Masking Tape</i> .....	<b>Page 8</b>
<b>Pro® 796</b> <i>pH Neutral Masking Tape</i> .....	<b>Page 8</b>
<b>Pro® Scenic 714</b> <i>Blue Mask 14 Day Painter's Tape</i> .....	<b>Page 8</b>
<b>Pro® 183</b> <i>Kraft Paper Tape</i> .....	<b>Page 9</b>
<b>Pro® 184HD</b> <i>Kraft Paper Tape</i> .....	<b>Page 9</b>
<b>Pro® 910</b> <i>Polypropylene Film Tape</i> .....	<b>Page 9</b>
<b>Pro® Seal 300</b> <i>General Purpose Carton Sealing Tape</i> .....	<b>Page 9</b>
<b>Pro® 180</b> <i>Filament Tape</i> .....	<b>Page 9</b>

## Pro® Stitchery Tape



Pro® Stitchery Tape is a double coated tape for stitchery mounting. Pro® Stitchery Tape is a general purpose double coated acrylic based adhesive tape designed for bonding safely to delicate fabrics such as silk, linen and velvet. Excellent for framing of sports jerseys.

Colors: Transparent with white liner

### Technical Specs

Backing: PET	Adhesive: Acrylic based
Total Thickness: 3.75 mils	Temperature Range: 50°F to 104°F

## Pro® Fillet Tape



Pro® Fillet Tape is a double coated tape with an acrylic solvent based adhesive. Pro® Fillet Tape is designed to attach the fillet or slip to the picture mount in the framing industry. Pro® Fillet Tape is used for mounting decorative trims such as PVC profile for the furniture industry. Pro® Fillet Tape can also be used for fastening of nameplates, trophy, luggage tag, wooden trims and signs. Pro® Fillet Tape is used for permanent bonding to most substrates, such as metal, wood, glass, cement and plastics.

Colors: Transparent with white liner

### Technical Specs

Backing: PET	Adhesive: Acrylic based
Total Thickness: 3.75 mils	Temperature Range: 50°F to 104°F

## Pro® Felt

Made in the USA



Pro® Felt Tape is an anti-squeak tape used in the framing industry over the hardware for better adhesion and wall protection. Pro® Felt Tape is designed for anti-squeak applications requiring high adhesion to low surface energy materials. Pro® Felt Tape is used in the framing industry to be applied to the bottom corners (in lieu of using rubber bompons) over the hardware for better adhesion and wall protection.

Colors: Black

### Technical Specs

Backing: Poly-cotton Flock (Fabric: 65% Polyester, 35% Cotton, Flock: 100% Nylon)	
Adhesive: Acrylic	Total Thickness: 35.1 mils
Peel Adhesion: 102 oz. /in	



### Pro® 154 ATG

Made in the USA



Pro® 154 ATG 2 mil Adhesive Transfer Tape. Pro® 154 ATG is an excellent adhesive for flying splices on paper, films, and foil. This product can be used for laminating, mounting and nameplate applications, aluminum foil identification plates, and miscellaneous holding. Compatible for use with our Pro® ATG HD Dispenser.

Colors: Transparent

#### Technical Specs

Adhesive: Acrylic	Total Thickness: 2.0 mils (without liner)
Temperature Range: -20°F to 150°F	Adhesion to steel: 32 oz per inch

### Pro® 156 ATG

Made in the USA



Pro® 156 5 mil Adhesive Transfer Tape. Pro® 156 AGT can be used as a laminating adhesive for foam, fabrics, metal or plastic nameplates, and is an excellent product for splicing of films, fabrics and foils. It is also suited for joining materials with irregular or textured surfaces. Compatible for use with our Pro® ATG HD Dispenser.

Colors: Transparent

#### Technical Specs

Adhesive: Acrylic	Total Thickness: 9.0 mils (including liner)
Temperature Range: 70°F to 100°F	Adhesion to steel: 75 oz per inch

### Pro® 410 ATG



Pro® 410 ATG is a double coated non-woven adhesive transfer tape coated on both sides with an aggressive acrylic pressure sensitive adhesive. Pro® 410 ATG is used for bonding and laminating to a wide variety of cloths, vinyl, corks, paper, rigid and flexible plastics. Pro® 410 ATG can be used for framing and mounting displays, such as signs, covers, posters, and nameplates. 1" ID Plastic Core. Compatible for use with our Pro® ATG HD Dispenser.

Colors: Transparent with white liner

#### Technical Specs

Backing: Tissue	Adhesive: Solvent based acrylic
Total Thickness: 4.33 mils	Temperature Range: -4°F to 212°F
Tensile Strength: 142 lbs per inch	Adhesion to steel: 89 oz. per inch

### Pro® ATG Blue Dispenser



Pro® ATG HD Dispenser is an Adhesive Transfer Tape Dispenser with Extended Nose Works for All Sizes

Colors: Blue



**Pro® 155**  
Made in the USA



Pro® 155 is a hand-held 2 mil Adhesive Transfer Tape on a 3" I.D. core. Pro® 155 is an excellent adhesive for flying splices on paper, films, and foil. This product can be used for laminating, mounting and nameplate applications. Ideal for high processing temperatures. Ideally suited for use in printer's dry tunnels. Performance proven dependability promotes production line efficiencies in paper and film industries.

Colors: Transparent

**Technical Specs**

Adhesive: Acrylic	Total Thickness: 2.0 mils (without liner)
Temperature Range: 10°F to 390°F	Adhesion to steel: 20 oz per inch

**Pro® 156**  
Made in the USA



Pro® 156 5 mil Adhesive Transfer Tape. The standard core is a 3" I.D. plastic core. Pro 156 can be used as a laminating adhesive for foam, fabrics, metal or plastic nameplates, and is an excellent product for splicing of films, fabrics and foils. It is also suited for joining materials with irregular or textured surfaces.

Colors: Clear

**Technical Specs**

Adhesive: Acrylic	Total Thickness: 9.0 mils (including liner)
Temperature Range: 70°F to 100°F	Adhesion to steel: 75 oz per inch

**Pro® 410**



Pro® 410 is a double coated non-woven tape coated on both sides with an aggressive acrylic pressure sensitive adhesive. The standard core is a 3" I.D. paper core. Pro® 410 is used for bonding and laminating to a wide variety of cloths, vinyl's, corks, paper, rigid and flexible plastics. Pro® 410 is can be used for mounting displays, such as signs, covers, posters, and nameplates. This product can also be used to support the lamination process in the leather industry.

Colors: Transparent with white liner

**Technical Specs**

Backing: Tissue	Adhesive: Solvent based acrylic
Total Thickness: 7.83 mils	Temperature Range: -4°F to 212°F
Adhesion to steel: 89 oz per inch	Elongation: 3.5%



## UGlu® 200 Strips Family Pack

Made in the USA



UGlu® 200 Strips Family Pack features 20mil rubber based mounting adhesive strips with three different sizes in each pack. Common applications for UGlu® are: mounting, bonding, securing, temporary holding and carpet installation. This product adheres well to all woods and metals.

Colors: Transparent

### Technical Specs

Adhesive: Rubber	Total Thickness: 20 mils
Family Pack: (5) 1 in x 2 in, (5) 1 in x 3 in, (5) 1 in x 4 in	
Pcs/Case: 1080	Pcs/Pack: 15
Packs/Master: 72	

## UGlu® 300 Power Patch

Made in the USA



UGlu® 300 Power Patch features 20mil rubber based mounting adhesive patch 3" x 3". Common applications for UGlu® are: mounting, bonding, securing, temporary holding and carpet installation. This product adheres well to all woods and metals.

Colors: Transparent

### Technical Specs

Adhesive: Rubber	Total Thickness: 20 mils
Power Patch (5) 3in x 3in Strips	Pcs/Case: 720
Pcs/Pack: 5	Packs/Master: 144

## UGlu® 500 1"x60in Roll

Made in the USA



UGlu® 500 Roll features 20mil rubber based mounting adhesive on a roll 1"x5ft or 1"x60in. Common applications for UGlu® are: mounting, bonding, securing, temporary holding and carpet installation. This product adheres well to all woods and metals.

Colors: Transparent

### Technical Specs

Adhesive: Rubber	Total Thickness: 20 mils
1"x60" Roll on 1" ID Core	1 Roll Per Pack
Clamshell Each Roll	Packs/Master: 48

## UGlu® 600 Dashes Sheets

Made in the USA



UGlu® 600 Dash Sheets features 20mil rubber based mounting adhesive squares 1/2" x 5/8" on sheets. Common applications for UGlu® are: mounting, bonding, securing, temporary holding and carpet installation. This product adheres well to all woods and metals.

Colors: Transparent

### Technical Specs

Adhesive: Rubber	Total Thickness: 20 mils
Dash Sheets 1/2in x 5/8in squares	40 Dashes per sheet
4 Sheets per envelope/pack	160 Dashes per envelope/pack
144 packs per master	

\*Not recommended for use on plastics.



## UGlu® 650 Dashes Rolls

Made in the USA



UGlu® 650 Dashes Roll features 20mil rubber based mounting adhesive squares 1/2" x 5/8" on a convenient roll. Common applications for UGlu® are: mounting, bonding, securing, temporary holding and carpet installation. This product adheres well to all woods and metals.

Colors: Transparent

### Technical Specs

Adhesive: Rubber	Total Thickness: 20 mils
Dash Roll, 1/2 in x 5/8 in squares	200 Dashes per Roll
Pcs/Pack: 1 roll	Packs/Master: 96

## UGlu® 700 DIY Pack

Made in the USA



UGlu® 700 DIY Pack features 20mil rubber based mounting adhesive pack of 1 roll (1"x60"), 4 dash sheets (1/2"x5/8"), 15 strips (1"x3"). Common applications for UGlu® are: mounting, bonding, securing, temporary holding and carpet installation. This product adheres well to all woods and metals.

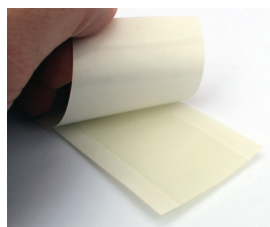
Colors: Transparent

### Technical Specs

Adhesive: Rubber	Total Thickness: 20 mils
DIY Pack (1) 1 in x 60 in Roll, (4) 1/2 in x 5/8 in Dash Sheets, (15) 1 in x 3 in Strips	
Pcs/Pack: 20	Packs/Master: 12

## UGlu® 900 Contractor Pack

Made in the USA



UGlu® 900 Contractor Pack features 20mil rubber based mounting adhesive pack of 250 1"x3" strips. Common applications for UGlu® are: mounting, bonding, securing, temporary holding and carpet installation. This product adheres well to all woods and metals.

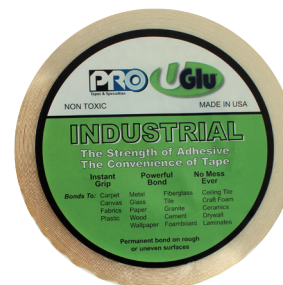
Colors: Transparent

### Technical Specs

Adhesive: Rubber	Total Thickness: 20 mils
Contractor Pack (250) 1 in x 3 in Strips	Pcs/Case: 1,500 sheets
Pcs/Pack: 250 roll	Packs/Master: 6

## UGlu® Industrial Roll

Made in the USA



UGlu® Industrial Roll features 20mil rubber based mounting adhesive roll available in 1"x65ft or 3/4"x65ft. Common applications for UGlu® are: mounting, bonding, securing, temporary holding and carpet installation. This product adheres well to all woods and metals.

Colors: Transparent

### Technical Specs

Adhesive: Rubber	Total Thickness: 20 mils
UGlu® 20mil 3/4x65FT Slit Imperial, Shrink wrapped with Front & Back Roll Label	
UGlu® 20mil 1x65FT Slit Imperial, Shrink wrapped with Front & Back Roll Label	

\*Not recommended for use on plastics.



### Pro® 5050C



Pro® 5050C EHB (Extreme High Bond) is a modified acrylic foam adhesive tape. Pro® 5050C EHB (Extreme High Bond) tape is used in many indoor and outdoor applications. EHB Tape often replaces spot welds, rivets, nails, liquid adhesives and other permanent fasteners.

Colors: Clear

#### Technical Specs

Adhesive: Modified Acrylic	Total Thickness: 20 mils
Temperature Range: up to 248°F	Tensile Strength: 75 lbs per inch

### Pro® 5100C



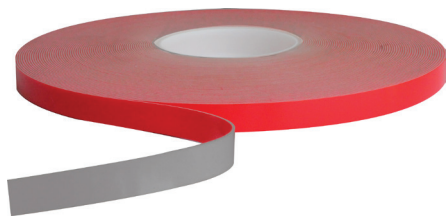
Pro® 5100C EHB (Extreme High Bond) is a modified acrylic foam adhesive tape. Pro® 5100C EHB (Extreme High Bond) tape is used in many indoor and outdoor applications. EHB tape often replaces spot welds, rivets, nails, liquid adhesives and other permanent fasteners.

Colors: Clear

#### Technical Specs

Adhesive: Modified Acrylic	Total Thickness: 40 mils
Temperature Range: Long term: up to 212°F	
Tensile Strength: 86 lbs per inch	

### Pro® 5110G



Pro® 5110G EHB (Extreme High Bond) is a modified acrylic foam adhesive tape. Pro® 5110G EHB (Extreme High Bond) tape is used in many indoor and outdoor applications. EHB tape often replaces spot welds, rivets, nails, liquid adhesives and other permanent fasteners.

Colors: Grey

#### Technical Specs

Adhesive: Modified Acrylic	Total Thickness: 45 mils
Temperature Range: Long term: up to 212°F	
Tensile Strength: 86 lbs per inch	

### Pro® 5110W



Pro® 5110W EHB (Extreme High Bond) is a modified acrylic foam adhesive tape. Pro® 5110W EHB (Extreme High Bond) tape is used in many indoor and outdoor applications. EHB tape often replaces spot welds, rivets, nails, liquid adhesives and other permanent fasteners.

Colors: White

#### Technical Specs

Adhesive: Modified Acrylic	Total Thickness: 45 mils
Temperature Range: Long term: up to 212°F	Tensile Strength: 86 lbs per inch



## Artist Tape

Made in the USA



Artist Tape is a premium flatback paper tape. Artist Tape is used for color coding, labeling. Artist Tape is printable with: flexo inks, markers, pens and pencils.

Colors: White, Blue, Black, Green, Orange, Yellow, Red, FL Orange, FL Green, FL Pink, FL Yellow

### Technical Specs

Adhesive: Flatback paper	Adhesive: Synthetic Rubber
Total Thickness: 5.8 mils	Temperature Range: 40°F to 150°F
Tensile Strength: 30 lbs per inch	Adhesion to steel: 57 oz per inch

## Pro® Drafting

Made in the USA



Pro® Draft tape is an industrial grade masking tape with specially formulated adhesive system, designed for the drafting and stationary trades. It minimizes residues and resists water solvents and oil and has an excellent shelf-life. Not designed or guaranteed for exacting industrial masking spray, painting or oven baking applications.

Colors: Natural

### Technical Specs

Adhesive: Crepe paper	Adhesive: Rubber resin
Total Thickness: 7.0 mils	Tensile Strength: 18 lbs per inch
Adhesion to steel: 18 oz per inch	Elongation: 7%

## Pro® Framers

Made in the USA



Pro® Framers is a premium polyethylene coated cloth tape. Pro® Framers was developed specifically for mounting, matting and framing artwork and prints.

Colors: White

### Technical Specs

Adhesive: PH Neutral rubber resin	Total Thickness: 11 mils
Tensile Strength: 35 lbs per inch	Adhesion to steel: 75 oz per inch

## Pro® Premium Black Masking

Made in the USA



Pro® Premium Black Mask tape is a medium crepe paper masking tape coated with pressure sensitive rubber based adhesive. Pro® Premium Black Mask tape is a medium crepe paper tape coated with pressure sensitive rubber based adhesive. Pro® Premium Black Mask is designed for light-weight packaging, bag locking and decorative edging. Pro® Premium Black Mask can be used in masking off areas in acrylic and watercolor painting.

Colors: Black

### Technical Specs

Adhesive: Medium crepe paper	Adhesive: Synthetic rubber/resin
Total Thickness: 5.7 mils	Temperature Range: 40°F to 150°F
Tensile Strength: 19 lbs per inch	Adhesion to steel: 32 oz per inch



## Pro® 795

Made in the USA



Pro® 795 is a general purpose masking tape. Pro® 795 provides excellent adhesion to a wide variety of surfaces in a number of fields including, light bundling, packaging and closing, and light duty masking.

Colors: Natural

### Technical Specs

Backing: Crepe paper	Adhesive: Solvent Based Natural Rubber
Total Thickness: 4.3 mils	Temperature Range: 60°F - 150°F
Tensile Strength: 16 lbs per inch	Adhesion to steel: 35 oz per inch

## Pro® 796



Pro® 796 premium grade, highly versatile, pH Neutral masking tape. Pro® 796 is ideal tape for light-duty packaging. Well suited for paint masking, general sealing, holding, reinforcing and splicing applications.

Colors: Natural/Tan

### Technical Specs

Backing: Impregnated crepe kraft paper	
Adhesive: Natural rubber/resin	Total Thickness: 6.5 mils
Temperature Range: 340°F for 30 minutes	
Tensile Strength: 25 lbs per inch	Adhesion to steel: 35 oz per inch

## Pro® Scenic 714 Blue Mask

Made in the USA



Pro® Scenic 714 Blue Mask is a 14-day painter's tape. Pro® Scenic 714 Blue Mask should be used wherever masking will be exposed to weather/outdoors conditions, interior masking of windows (where adhesive will be directly exposed to sunlight). Pro® Scenic 714 Blue Mask is compatible for use on lacquer or polyurethane - coated surfaces, unfinished wood, wallpaper, and new, unpainted, or freshly painted wallboard.

Colors: Blue

### Technical Specs

Backing: Fine structured crepe paper	Adhesive: Synthetic Rubber
Total Thickness: 5.7 mils	Temperature Range: 50°F to 200°F
Tensile Strength: 32 lbs per inch	Adhesion to steel: 26 oz per inch

## Pro® 183



Pro® 183 is a paper carton sealing tape for light-to-medium packaging. Pro® 183 Kraft Paper Tape is a pressure sensitive, light brown flat back paper packaging tape. Pro® 183 kraft is a flatback paper tape with good tensile strength. Pro® 183 is recommended for the following applications: light-to-medium carton sealing, packaging, picture framing, splicing and tabbing.

Colors: Light Brown

### Technical Specs

Backing: Paper	Adhesive: Rubber - Resin
Total Thickness: 6.0 mils	Tensile Strength: 38.6 lbs per inch
Elongation: 9%	Adhesion to steel: 37.8 oz per inch

### Pro® 184HD



Pro® 184HD is a high tensile kraft flat back paper carton sealing tape. Pro® 184HD Kraft Paper Tape is a pressure sensitive, flat back packing tape. Pro® 184HD is a high tensile kraft paper carton sealing tape for standard and heavy duty packaging. Pro® 184HD was developed for sealing boxes for the “moving” industry, where high hold and easy tearing is required. It can also be used to make roll-to-roll splices on the paper and paperboard industries for high tension and temperature demanding processes.

Colors: Dark Brown

#### Technical Specs

Backing: Paper	Adhesive: Rubber- Resin
Total Thickness: 6.5 mils	Tensile Strength: 56 lbs per inch
Adhesion to steel: 68.1 oz per inch	Elongation: 3%

### Pro® 910



Pro® 910 Not Clear to the Core - 2mil Polypropylene Tape - Razor Slit. Pro 910 is designed for laminating and repairs where clarity and strength are extremely important. It's also an industrial strength clear film tape developed for use in packaging, carton and package sealing, overlays and laminating, and label protection.

Colors: Clear

#### Technical Specs

Backing: Biaxially oriented polypropylene film	
Adhesive: Solvent acrylic	Total Thickness: 2.0 mils
Tensile Strength: 20 lbs per inch	Elongation %: 140
Adhesion to steel: 35 oz per inch	
Adhesion to steel: 25 oz per inch Tensile Strength: 25 lbs per inch	

### Pro® Seal 300



Pro® Seal 300 is a polypropylene general purpose carton sealing tape. Pro® Seal 300 is excellent for all general purpose hot melt carton sealing applications. Pro® Seal 300 is designed for smooth and easy dispensing.

Colors: Clear, Tan

#### Technical Specs

Backing: Biaxially-oriented polypropylene film	
Adhesive: Synthetic rubber / resin	Total Thickness: 1.8 mils
Tensile Strength: 27 lbs per inch	Adhesion to steel: 32 oz per inch
Elongation: 70%	

### Pro® 180

Made in the USA



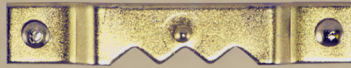
Pro® 180 is a filament reinforced strapping tape. Pro® 180 is a utility grade fiberglass reinforced tape designed for the majority of packaging, palletizing and unitizing applications.

Colors: Clear

#### Technical Specs

Backing: Biaxially oriented polypropylene film	Adhesive: Synthetic rubber resin
Total Thickness: 4.0 mils	Tensile Strength: 100 lbs per inch
Adhesion to steel: 48 oz per inch	Elongation: 3%





Pro Tapes & Specialties® is a tape manufacturer and supplier. For over 40 years we've produced our own quality products in addition to being contracted to improve productivity and profitability with our converting, supply chain and inventory management solutions for some of the most well-known brands in adhesives.

Our tapes are ideal for mounting, hinging, framing, and preservation; we offer a robust line of Picture Framing tapes that are safe for mounting artwork, attaching dust covers to back of frames and sticking double mats together. Many of our tapes are non-yellowing, clean removable, pH Neutral and acid free. We carry a wide selection of tapes engineered specifically for custom picture framing, whether hand-held tapes or tapes designed to be dispensed by an ATG Gun.

**Pro Tapes & Specialties®**  
621 Route 1 South,  
North Brunswick, NJ 08902



**Toll Free: (800) 345-0234**  
**Email: [sales@protapes.com](mailto:sales@protapes.com)**  
**[www.protapes.com](http://www.protapes.com)**