



BUILDING & CONSTRUCTION

Pro Tapes & Specialties, Inc.® offers a large selection of tape products engineered for high performance in demanding applications associated with the building and construction marketplace.



Table of Contents

ROOFING & GUTTERS

Pro® Flex Single Sided Butyl Tape 4
Pro® 248 Double Sided Butyl Tape 4
Pro® 931 Single Coated Polyethylene Tape (9 mils) 4
Pro® 924 Single Coated Polyethylene Tape (7.5 mils) 4

WINDOWS, DOORS & DECKING

Pro® Flash 14 Flashing Tape (14 mils) 5
Pro® Flash 65 Premium Flashing Tape (65 mils) 5
Pro® Flex Single Sided Butyl Tape 5

HVAC & PLUMBING

Pro® 603 PVC Pipe Wrap Tape (10 mils) 6
Pro® 20 PVC Pipe Wrap Tape (20 mils) 6
Pro® 817L Aluminum Foil Tape 6
Pro® Plus Electrical Tape 6
Pro® P-28 Boxed Electrical Tape 7
Pro® Friction Tape Friction Abrasion Protection Tape 7
Pro® Duct 120 Industrial Grade Duct Tape (10 mils) 7
Pro® 920 Self-Fusing Silicone Tape 7
Pro® Thread Seal Tape Thread Seal Tape 8
Pro® 818 ASJ ASJ (All Service Jacket) Tape 8
Pro® 819 FSK FSK (Foil Scrim Kraft) Tape 8

ELECTRICAL

Pro® Plus Electrical Tape 9
Pro® P-28 Boxed Electrical Tape 9
Pro® Friction Tape Friction Abrasion Protection Tape 9

FLOORING

Pro® 822 Floor Protection Tape 10
Pro® 888C Carpet Protection Tape 10
Pro® Carpet Safe Tape Carpet Safe Tape 10
Pro® 500B Double Coated Carpet Tape 10

SHEATHING & MOISTURE MANAGEMENT

Pro® 924 Single Coated Polyethylene Tape (7.5 mils) 11
Pro® 931 Single Coated Polyethylene Tape (9 mils) 11
Pro® 920 Self-Fusing Silicone Tape 11

PAINTING & DRYWALL

Pro® Scenic 714 Blue Mask 14 Day Painter's Tape 12
Pro® 788 Ultimate Masking Tape 60 Day Premium Painter's Tape 12
Pro® 795 General Purpose Masking Tape 12
Pro® 888C Carpet Protection Tape 12
Pro® 924 Single Coated Polyethylene Tape (7.5 mils) 13
Pro® 931 Single Coated Polyethylene Tape (9 mils) 13
Pro® 920 Self-Fusing Silicone Tape 13

FRAMING & INSULATION

Pro® 185 Flatback Paper Tape 14
Pro® 917 Polyester Film House Wrap Tape 14
Pro® 920 Self-Fusing Silicone Tape 14
Pro® 931 Single Coated Polyethylene Tape (9 mils) 14
Pro® 924 Single Coated Polyethylene Tape (7.5 mils) 15
Pro® 200HD Embossed Vinyl Tape 15

POOL & SPA

Pro® Flex Single Sided Butyl Tape 16
Pro® 248 Double Sided Butyl Tape 16
Pro® 920 Self-Fusing Silicone Tape 16
Pro® 160 Transparent Waterproof Duct Tape (6 mils) 16
Pro® 603 PVC Pipe Wrap Tape (10 mils) 17
Pro® 20 PVC Pipe Wrap Tape (20 mils) 17

ABATEMENT

Pro® Duct 120 Industrial Grade Duct Tape 18
Pro® 924 Single Coated Polyethylene Tape (7.5 mils) 18
Pro® 931 Single Coated Polyethylene Tape (9 mils) 18
Pro® 514 Double Coated Poly Sheetting Tape (9 mils) 18

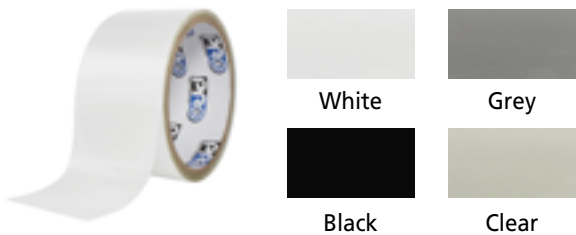
GENERAL PURPOSE PRODUCTS

Pro Gaff® Premium Cloth Gaffers Tape 19
Pro® Duct 120 Industrial Grade Duct Tape 19
Pro® 148 Heavy Duty Duct Tape (17 mils) 19
Pro® Thread Seal Tape Thread Seal Tape 20
Pro® Scenic 714 Blue Mask 14 Day Painter's Tape 20
Pro® 788 Ultimate Masking Tape 60 Day Premium Painter's Tape 20
Pro® 795 General Purpose Masking Tape 20
Pro® 500B Double Coated Carpet Tape 21
Pro® 822 Floor Protection Tape 21
Pro® 888C Carpet Protection Tape 21
Pro® Plus Electrical Tape 21
Pro® P-28 Boxed Electrical Tape 22
Pro® Friction Tape Friction Abrasion Protection Tape 22
Caution Ribbon Non-Adhesive Caution Ribbon 22

Specialty Services



Pro® Flex
Single Sided Butyl Tape

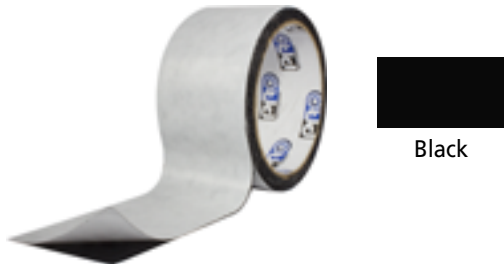


Pro® Flex Tape can be used to reinforce non-leaking seams and for additional security around curbs, vents, chimneys, AC systems, antennas or any roof-penetrating devices. Commonly used as joist tape to protect rim joists.

Technical Specs

Adhesive: Butyl rubber	Tensile Strength: 15 lbs per inch
Total Thickness: 28 mils (+ / - 2 mils)	Elongation: 700%
Temp. Range: -70°F to 200°F	Adhesion to steel: 14 oz per inch

Pro® 248
Double Sided Butyl Tape



Pro® 248 is used for waterproofing of residential houses and noise insulation applications because of its superior durability and excellent cold and heat resistance.

Pro® 248 is ideal for bonding substrates in wet conditions, and general purpose repairs.

Technical Specs

Adhesive: Butyl rubber	Tensile Strength: 9 lbs per inch
Total Thickness: 20 mils	Adhesion to steel: 87 oz per inch
Temperature Range: up to 200°F	

Pro® Flash 14
Flashing Tape (14 mils)



Common applications for Pro® Flash 14 include: sealing around windows, doors, and other openings and transitions in exterior walls.

Technical Specs

Backing: PP Film	Temp. Range: -30°F to 200°F
Adhesive: Butyl hybrid	
Total Thickness: 14 mils without liner	

Pro® Flash 65
Premium Flashing Tape (65 mils)



Common applications for Pro® Flash 65 include: sealing around windows, doors, and other openings and transitions in exterior walls. Pro® Flash 65 stretches in the length direction to conform around sill pans and curved penetrations.

Technical Specs

Backing: Micro creped PP film	Temp. Range: -30°F to 200°F
Adhesive: Butyl hybrid	Elongation: > 600%
Total thickness: 65 mils without liner	

Pro® 931
Single Coated Polyethylene Tape (9 mils)

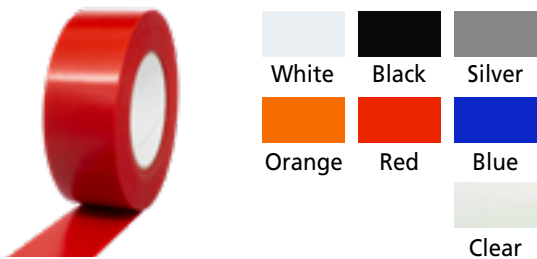


Common applications for Pro® 931 include: agricultural general purpose repair and protection, wire identification, high durability surface protection, polyethylene splicing. General industrial masking, bundling, splicing and repair applications. All-purpose waterproof sealing applications.

Technical Specs

Backing: Polyethylene film	Tensile Strength: 22 lbs per inch
Adhesive: Synthetic rubber	Elongation: 100%
Total Thickness: 9 mils	Adhesion to steel: 85 oz per inch
Temp. Range: 32°F to 160°F	

Pro® 924
Single Coated Polyethylene Tape (7.5 mils)

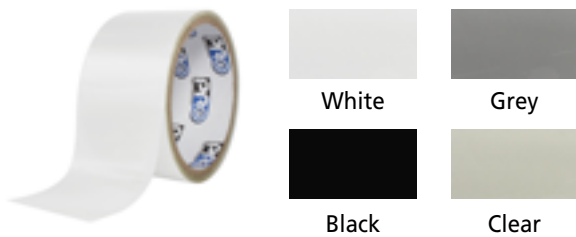


Common applications for Pro® 924 include: hanging, splicing, seaming and patching of polyethylene sheeting. Multi-purpose sealing, bonding and repair within asbestos/abatement removal applications. General surface protection of a range of materials. Temporary masking. Holding/hanging of sheeting.

Technical Specs

Backing: Polyethylene film	Tensile Strength: 24 lbs per inch
Adhesive: Synthetic rubber	Elongation: 70%
Total Thickness: 7.5 mils	Adhesion to steel: 75 oz per inch
Temperature Range: 32°F to 160°F	

Pro® Flex
Single Sided Butyl Tape



Pro® Flex Tape can be used to reinforce non-leaking seams and for additional security around windows, doors, curbs, vents, chimneys, AC systems, antennas or any roof-penetrating device.

Also commonly used as joist tape to protect rim joists.

Technical Specs

Adhesive: Butyl rubber	Tensile Strength: 15 lbs per inch
Total Thickness: 28 mils (+ / - 2 mils)	Elongation: 700%
Temp. Range: -70°F to 200°F	Adhesion to steel: 14 oz per inch

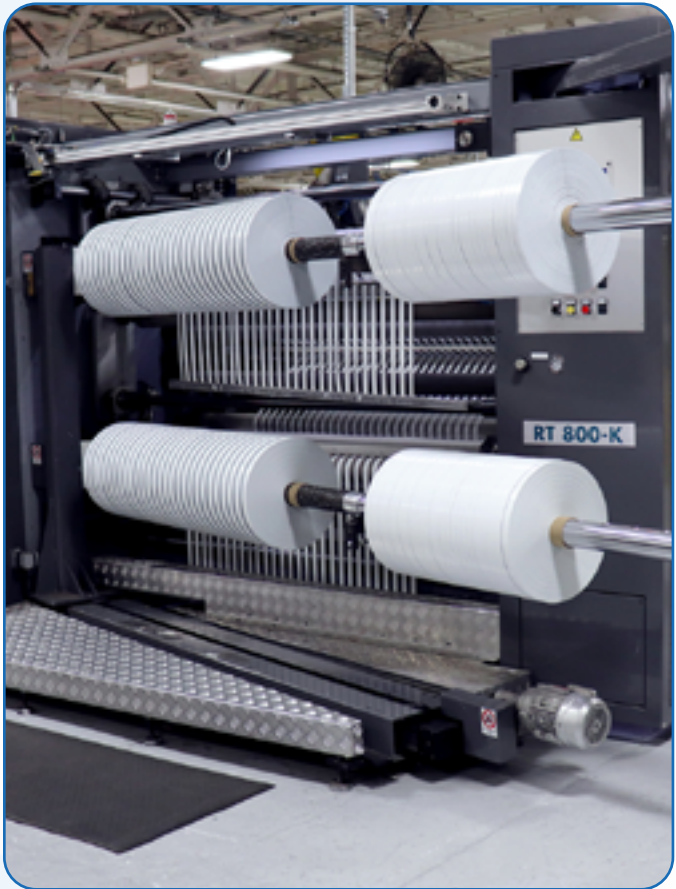


Photo: Jumbo or master rolls custom slit OEM or industrial length up to 800mm.



Pro® 603

PVC Pipe Wrap Tape (10 mils)




Pro® 603 is a pipe wrap or surface protection tape highly resistant to sun, water, oil, acids and corrosive chemicals while providing electrical protection. Protects joints and conduit coupling for overhead or direct buried applications.

Pro® 603 is flame retardent and resists bacteria and fungus.

Technical Specs

Backing: Plasticized PVC	Tensile Strength: 23 lbs per inch
Adhesive: Rubber based adhesive	Elongation: 200%
Total Thickness: 10 mils	Adhesion to steel: 22 oz per inch
Temp. Range: 14°F to 176°F	

 WARNING: This product can expose you to chemicals including Diisononyl phthalate (DINP), which is known to the State of California to cause cancer, and Diisodecyl phthalate (DIDP), which is known to the State of California to cause birth defects or other reproductive harm. For more information, go to www.P65Warnings.ca.gov.

Pro® 20


PVC Pipe Wrap Tape (20 mils)



Pro® 20 is typically used as a pipe wrap and surface protection tape. Pro® 20 provides electrical protection, as well as protection for pipe joints, conduit couplings for overhead or direct buried applications. Pro® 20 is an excellent masking tape for hard chrome plating and anodizing.

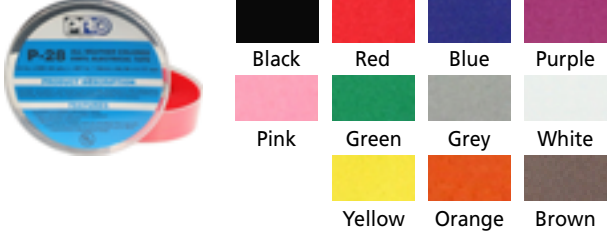
Technical Specs

Backing: Soft PVC (Polyvinyl Chloride)	Temp. Range: 14°F to 176°F
Adhesive: Rubber based	Tensile Strength: 32 lbs per inch
Total Thickness: 20 mils	Adhesion to steel: 11 oz per inch

 WARNING: This product can expose you to chemicals including Diisononyl phthalate (DINP), which is known to the State of California to cause cancer, and Diisodecyl phthalate (DIDP), which is known to the State of California to cause birth defects or other reproductive harm. For more information, go to www.P65Warnings.ca.gov.

Pro® P-28


Boxed Electrical Tape



Pro® P-28 is typically used for insulating wire splices, harness wrapping and general industrial maintenance.

Technical Specs

Backing: Vinyl film	Tensile Strength: 20 lbs per inch
Adhesive: Rubber based	Elongation: 200%
Total Thickness: 7 mils	Adhesion to steel: 11.7 oz to 14.3 oz per inch

 WARNING: This product can expose you to chemicals including Diisononyl phthalate (DINP), which is known to the State of California to cause cancer, and Diisodecyl phthalate (DIDP), which is known to the State of California to cause birth defects or other reproductive harm. For more information, go to www.P65Warnings.ca.gov.

Pro® Friction Tape

Friction Abrasion Protection Tape



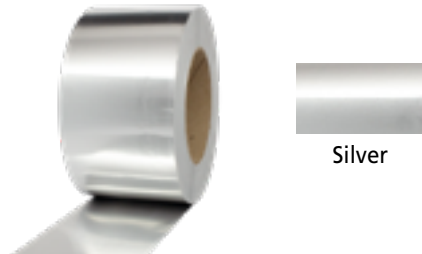
Pro® Friction is a general purpose tape that provides excellent protection against abrasion. Pro® Friction is ideal for use as a heavy duty binding and harnessing tape because of its high break strength and low stretch. Pro® Friction can also be applied over tool handles for non-slip grip.

Technical Specs

Adhesive: Rubber coated both sides	Tensile Strength: 48 lbs per inch
Total Thickness: 13 mils	Adhesion to steel: 40 oz per inch
Temperature Range: up to 176°F (80°C)	

Pro® 817L

Aluminum Foil Tape



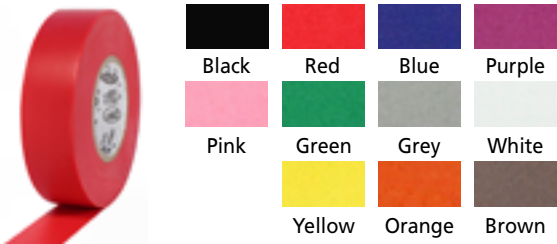
Pro® 817L is commonly used for moisture & vapor barrier needs and heat reflective applications. Useful for sealing out dust and dirt for underground cable and duct sealing applications.

Technical Specs

Backing: 1.8 mil Aluminum	Temp. Range: -40°F / 250°F
Adhesive: Acrylic	Elongation: 2.5%
Total Thickness: 2.8 mils without liner	

Pro® Plus


Electrical Tape



Pro® Plus is typically used for insulating wire splices, harness wrapping and general industrial maintenance.

Technical Specs

Backing: Vinyl film	Tensile Strength: Range: 16-20 lbs per inch
Adhesive: Rubber based	Elongation: 200%
Total Thickness: 7 mils	Adhesion to steel: 11.7 oz to 14.3 oz per inch

 WARNING: This product can expose you to chemicals including Diisononyl phthalate (DINP), which is known to the State of California to cause cancer, and Diisodecyl phthalate (DIDP), which is known to the State of California to cause birth defects or other reproductive harm. For more information, go to www.P65Warnings.ca.gov.

Pro® Duct 120

Industrial Grade Duct Tape (10 mils)



Pro® 120 typical applications include HVAC, industrial, commercial, utilities.

Technical Specs

Backing: Waterproof, polyethylene film with a cloth carrier	Tensile Strength: 27 lbs per inch
Adhesive: Natural rubber	Elongation: 17%
Total Thickness: 10 mils	Adhesion to steel: 55 oz per inch
Temperature Range: 50°F to 200°F	

Pro® 920

Self-Fusing Silicone Tape



Pro® 920 can be used to weatherproof machinery, color code complex conduit systems, repair and insulate damaged wiring, stop pressurized leaks, and pipe insulation.

Technical Specs

Backing: Silicone rubber	Temperature Range: -76°F to +500°F
Adhesive: Non-adhesive	Tensile Strength: 700 lbs per inch
Total Thickness: 20 mils	Elongation: 300%



Pro® Thread Seal Tape
Thread Seal Tape



Pro® Thread Seal Tape can be used on all types of threaded fittings for passage of water potable and non-potable, most chemicals, oxygen, gasoline, natural gas, hydraulic and high-pressure lines.

Technical Specs	
Backing: PTFE (polytetrafluoroethylene film)	Temp. Range: -450°F to +500°F
Total Thickness: 3.5 mils	Elongation: 50%

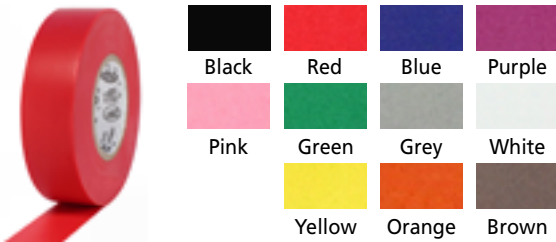
Pro® 818 ASJ
ASJ (All Service Jacket) Tape



Pro® 818 ASJ is designed for sealing seams and joints on duct and pipe insulation systems where ASJ insulation facing is used.


Technical Specs	
Backing: ASJ (All Service Jacket)	Total Thickness: 11.5 mils (without liner)
Adhesive: Solvent acrylic	Tensile Strength: 50 lb. per inch

Pro® Plus
Electrical Tape

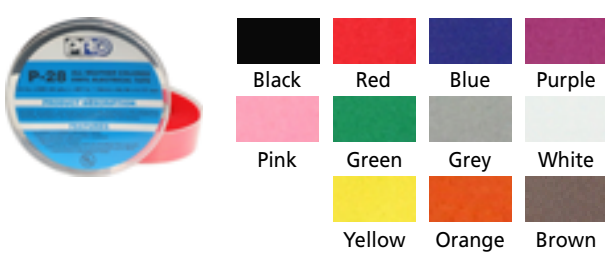


Pro® Plus is typically used for insulating wire splices, harness wrapping and general industrial maintenance.

Technical Specs	
Backing: Vinyl film	Tensile Strength: Range: 16 - 20 lbs per inch
Adhesive: Rubber based	Elongation: 200%
Total Thickness: 7 mils	Adhesion to steel: 11.7 oz to 14.3 oz per inch


 WARNING: This product can expose you to chemicals including Diisononyl phthalate (DINP), which is known to the State of California to cause cancer, and Diisodecyl phthalate (DIDP), which is known to the State of California to cause birth defects or other reproductive harm. For more information, go to www.P65Warnings.ca.gov.

Pro® P-28
Boxed Electrical Tape

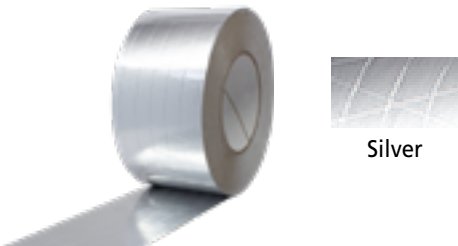


Pro® P-28 is typically used for insulating wire splices, harness wrapping and general industrial maintenance.

Technical Specs	
Backing: Vinyl film	Tensile Strength: 20 lbs per inch
Adhesive: Rubber based	Elongation: 200%
Total Thickness: 7 mils	Adhesion to steel: 11.7 oz to 14.3 oz per inch

 WARNING: This product can expose you to chemicals including Diisononyl phthalate (DINP), which is known to the State of California to cause cancer, and Diisodecyl phthalate (DIDP), which is known to the State of California to cause birth defects or other reproductive harm. For more information, go to www.P65Warnings.ca.gov.

Pro® 819 FSK
FSK (Foil Scrim Kraft) Tape



Pro® 819 FSK is used for sealing cold and dual temperature duct seams and joints where FSK is the basic insulation facing.

Technical Specs	
Backing: FSK (Foil Scrim Kraft)	Temperature Range: -25°F - 240°F
Adhesive: Solvent acrylic	Tensile Strength: 40 lbs per inch
Total Thickness: 6.5 mils (without liner)	

Pro® Friction Tape
Friction Abrasion Protection Tape



Pro® Friction is ideal for use as a heavy duty binding and harnessing tape because of its high break strength and low stretch. Pro® Friction can also be applied over tool handles for non-slip grip.

Technical Specs	
Adhesive: Rubber coated both sides	Tensile Strength: 48 lbs per inch
Total Thickness: 13 mils	Adhesion to steel: 40 oz per inch
Temperature Range: up to 176°F (80°C)	



Pro® 822

Floor Protection Tape



Blue

Pro® 822 is a polyethylene film coated with an inert water-based acrylic adhesive. The product is reverse wound and can be easily applied by hand or with an applicator.

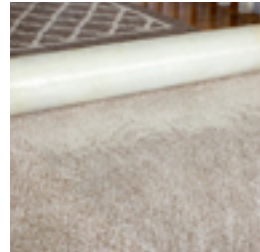
This temporary floor protection film provides protection during painting, remodeling, relocations or other high traffic situations. The many variations in floor materials; wood, natural stone, ceramics, etc. and the finishing techniques for each, make it imperative that the user determines its suitability.

Technical Specs

Backing: Polypropylene film	Adhesion to steel: 2.0-4.5 per inch
Adhesive: Water-based acrylic adhesive	Elongation: 325%
Tensile strength: 11 lbs per inch	Total Thickness: 3 mils

Pro® 888C

Carpet Protection Tape



Clear

Pro® 888C is a clear co-extruded multi-polymer film coated with a very high-tack acrylic adhesive system designed especially to help provide temporary protection of carpets, fabric interiors and carpeted door panels. Lies flat and creates a secure bond while still allowing for removability without tearing or silvering.

Pro® 888C is recommended for temporary protection of carpet and fabric made from synthetic fibers. Users should determine if suitable for specific application.

Technical Specs

Backing: Co-extruded multi-polymer	Tensile Strength: 11 lbs per inch
Adhesive: Acrylic	Elongation: 630%
Total Thickness: 3 mils	

Pro® 924

Single Coated Polyethylene Tape (7.5 mils)



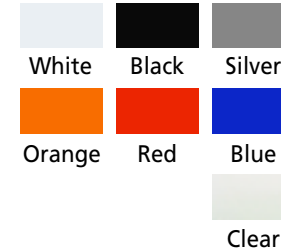
Common applications for Pro® 924 include: hanging, splicing, seaming and patching of polyethylene sheeting. Multi-purpose sealing, bonding and repair within asbestos/abatement removal applications. General surface protection of a range of materials. Temporary masking. Holding/hanging of sheeting.

Technical Specs

Backing: Polyethylene film	Tensile Strength: 24 lbs per inch
Adhesive: Synthetic rubber	Elongation: 70%
Total Thickness: 7.5 mils	Adhesion to steel: 75 oz per inch
Temp. Range: 32°F to 160°F	

Pro® 931

Single Coated Polyethylene Tape (9 mils)



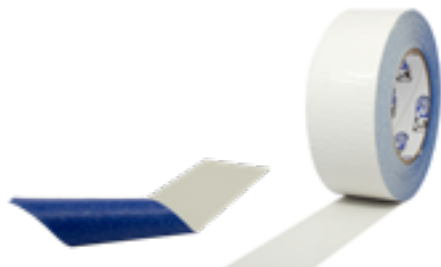
Common applications for Pro® 931 include: agricultural general purpose repair and protection, wire identification, high durability surface protection, polyethylene splicing. General industrial masking, bundling, splicing and repair applications. All-purpose waterproof sealing applications.

Technical Specs

Backing: Polyethylene film	Tensile Strength: 22 lbs per inch
Adhesive: Synthetic rubber	Elongation: 100%
Total Thickness: 9 mils	Adhesion to steel: 85 oz per inch
Temp. Range: 32°F to 160°F	

Pro® Carpet Safe Tape

Carpet Safe Tape



Blue

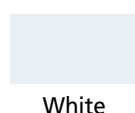
Pro® Carpet Safe Tape is used for temporary carpet hold down.

Technical Specs

Adhesive: Synthetic rubber-based/aggressive natural rubber	Tensile strength (open side): 21 lbs per inch
Liner: White natural kraft paper	Tensile strength (liner side): 6.2 lbs per inch
Liner thickness: 3.94 mils	Adhesion to steel (open side): 32 oz per inch
Total thickness without liner: 22.52 mils	Adhesion to steel (liner side): 8.5 oz per inch
Total thickness with liner: 26.46	

Pro® 500B

Double Coated Carpet Tape



White

Pro® 500B is a carpet hold-down tape. Pro® 500B is used for hanging, seaming and poly sheeting.

Other general purpose uses for Pro® 500B are in construction and aircraft manufacturing.

Technical Specs

Backing: Cloth	Temperature Range: up to 200°F
Adhesive: Rubber	Tensile Strength: 20 lbs per inch
Total Thickness: 11 mils	Adhesion to steel: 40 oz per inch

Pro® 920

Self-Fusing Silicone Tape



Black

Red

Pro® 920 can be used to weatherproof machinery, color code complex conduit systems, repair and insulate damaged wiring, stop pressurized leaks, and pipe insulation.

Technical Specs

Backing: Silicone rubber	Temperature Range: -76°F to 500°F
Adhesive: Non-adhesive	Tensile Strength: 700 lbs per inch
Total Thickness: 20 mils	Elongation: 300%
Specifications: Meets UL510 Requirements	



Pro® Scenic 714 Blue Mask
14 Day Painter's Tape



Pro® Scenic 714 Blue Mask is used wherever masking will be exposed to weather/outdoor conditions, interior masking of windows (where adhesive will be directly exposed to sunlight).

Pro® Scenic 714 Blue Mask is compatible for use on lacquer or polyurethane-coated surfaces, unfinished wood, wallpaper and new/unpainted or freshly painted wallboard.

Technical Specs	
Backing: Fine structured crepe paper	Tensile Strength: 21 lbs per inch
Adhesive: Synthetic Rubber	Elongation: 7%
Total Thickness: 5.6 mils	Adhesion to steel: 32 oz per inch
Temp. Range: 50°F to 200°F	Specifications: ASTM D6123 / D6123M-97 (2012) Type 1

Pro® 788 Ultimate Masking Tape
60 Day Premium Painter's Tape



Pro® 788 Ultimate Masking Tape is a professional 60 day painter's tape with a flat, smooth backing specifically designed for use where UV resistance and clean removal are required.

Pro® 788 Ultimate Masking Tape is excellent for use in surface sensitive applications such as painted drywall.

Technical Specs	
Backing: Smooth Paper	Tensile Strength: 23 lbs per inch
Adhesive: Acrylic	Elongation: 4.5%
Total Thickness: 3.6 mils	Adhesion to steel: 14 oz per inch
Temperature Range: 180°F for 30 minutes	

Pro® 924
Single Coated Polyethylene Tape (7.5 mils)



Common applications for Pro® 924 include: hanging, splicing, seaming and patching of polyethylene sheeting. Multi-purpose sealing, bonding and repair within asbestos/abatement removal applications. General surface protection of a range of materials. Temporary masking. Holding/hanging of sheeting.

Technical Specs	
Backing: Polyethylene film	Tensile Strength: 24 lbs per inch
Adhesive: Synthetic rubber	Elongation: 70%
Total Thickness: 7.5 mils	Adhesion to steel: 75 oz per inch
Temp. Range: 32°F to 160°F	

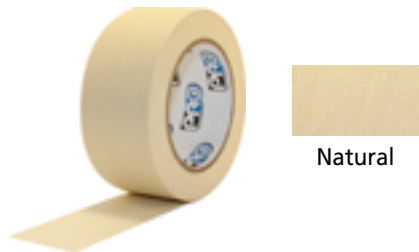
Pro® 931
Single Coated Polyethylene Tape (9 mils)



Common applications for Pro® 931 include: agricultural general purpose repair and protection, wire identification, high durability surface protection, polyethylene splicing. General industrial masking, bundling, splicing and repair applications. All-purpose waterproof sealing applications.

Technical Specs	
Backing: Polyethylene film	Tensile Strength: 22 lbs per inch
Adhesive: Synthetic rubber	Elongation: 100%
Total Thickness: 9 mils	Adhesion to steel: 85 oz per inch
Temp. Range: 32°F to 160°F	

Pro® 795
General Purpose Masking Tape



Pro® 795 provides excellent adhesion to a wide variety of surfaces in a number of fields including light bundling, light duty masking, and packaging or sealing.

Technical Specs	
Backing: Crepe paper	Tensile Strength: 18 lbs per inch
Adhesive: Synthetic Rubber	Elongation: 7%
Total Thickness: 4.6 mils	Adhesion to steel: 30 oz per inch
Temp. Range: 60°F to 150°F	

Pro® 888C
Carpet Protection Tape



Pro® 888C is a clear co-extruded multi-polymer film coated with a very high-tack acrylic adhesive system designed especially to help provide temporary protection of carpets, fabric interiors and carpeted door panels. Lies flat and creates a secure bond while still allowing for removability without tearing or silvering.

Pro® 888C is recommended for temporary protection of carpet and fabric made from synthetic fibers. Users should determine if suitable for specific application.

Technical Specs	
Backing: Co-extruded Multi-polymer	Tensile Strength: 11 lbs per inch
Adhesive: Acrylic	Elongation: 630%
Total Thickness: 3.0 mils	

Pro® 920
Self-Fusing Silicone Tape

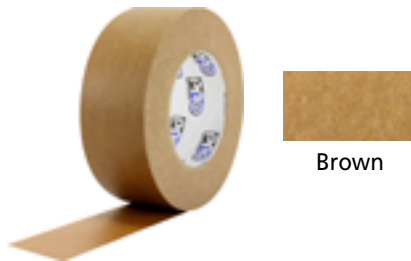


Pro® 920 can be used to weatherproof machinery, color code complex conduit systems, repair and insulate damaged wiring, stop pressurized leaks, and pipe insulation.

Technical Specs	
Backing: Silicone Rubber	Temperature Range: -76°F to 500°F
Adhesive: Non-adhesive	Tensile Strength: 700 lbs per inch
Total Thickness: 20.0 mils	Elongation: 300%
Specifications: Meets UL510 Requirements	



Pro® 185
Flatback Paper Tape



Pro® 185 is a general purpose economical flatback tape that will stick to a wide variety of substrates. Pro® 185 can be used for holding, tabbing, reinforcing, banding and patching.

Technical Specs	
Backing: Kraft flatback	Tensile Strength: 40 lbs per inch
Adhesive: Natural/Synthetic Rubber Blend	Elongation: 7%
Total Thickness: 7.3 mils	Adhesion to steel: 58 lbs per inch
Temperature Range: 60°F to 175°F	

Pro® 917
Polyester Film House Wrap Tape



Pro® 917 can be used in house wrapping, sealing seams, joints, crawl spaces, foam insulation boards, and vapor barriers.

Technical Specs	
Backing: Polyester Film	Temperature Range: 0°F to 230°F
Adhesive: Acrylic	Tensile Strength: 37 lbs per inch
Total Thickness: 3 mils	Elongation: 110%

Pro® 924
Single Coated Polyethylene Tape (7.5 mils)



Common applications for Pro® 924 include: hanging, splicing, seaming and patching of polyethylene sheeting. Multi-purpose sealing, bonding and repair within asbestos/abatement removal applications. General surface protection of a range of materials. Temporary masking. Holding/hanging of sheeting.

Technical Specs	
Backing: Polyethylene film	Tensile Strength: 24 lbs per inch
Adhesive: Synthetic rubber	Elongation: 70%
Total Thickness: 7.5 mils	Adhesion to steel: 75 oz per inch
Temperature Range: 32°F to 160°F	

Pro® 200HD
Embossed Vinyl Tape



Pro® 200HD is commonly used as a seaming tape for vinyl faced fiberglass insulation (i.e. metal buildings).

Technical Specs	
Backing: Matte White Vinyl Taffeta	Total Thickness: 7.4 mils with liner
Adhesive: Acrylic	Temperature Range: 0°F to 225°F

Pro® 920
Self-Fusing Silicone Tape



Pro® 920 can be used to weatherproof machinery, color code complex conduit systems, repair and insulate damaged wiring, stop pressurized leaks, and pipe insulation.

Technical Specs	
Backing: Silicone rubber	Temperature Range: -76°F to 500°F
Adhesive: Non-adhesive	Tensile Strength: 700 lbs per inch
Total Thickness: 20 mils	Elongation: 300%
Specifications: Meets UL510 Requirements	

Pro® 931
Single Coated Polyethylene Tape (9 mils)



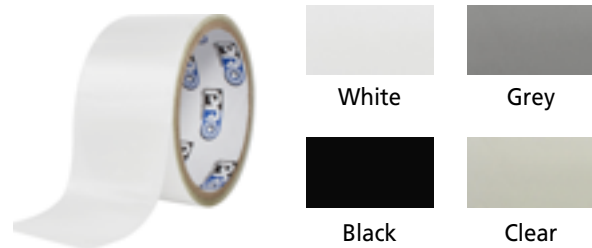
Common applications for Pro® 931 include: agricultural general purpose repair and protection, wire identification, high durability surface protection, polyethylene splicing. General industrial masking, bundling, splicing and repair applications. All-purpose waterproof sealing applications.

Technical Specs	
Backing: Polyethylene film	Tensile Strength: 22 lbs per inch
Adhesive: Synthetic rubber	Elongation: 100%
Total Thickness: 9 mils	Adhesion to steel: 85 oz per inch
Temp. Range: 32°F to 160°F	



Photo: Wide web jumbo roll processing with integrated closed core in-line roll wrapping and multi-roll wrap options available.

Pro® Flex Single Sided Butyl Tape

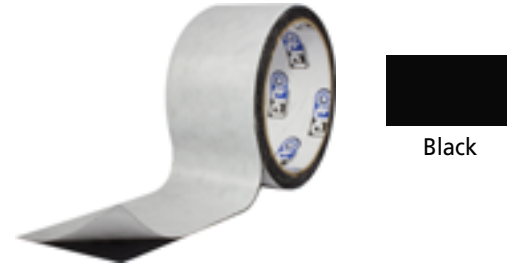


Pro® Flex Tape can be used to reinforce non-leaking seams and for additional security around any penetrating devices. This tape is easy to apply to any clean, dry surface. It is flexible and readily conforms to shapes, making it well suited for piping repairs or repairs of other curved equipment.

Technical Specs

Backing: TPO	Tensile Strength: 15 lbs per inch
Adhesive: Butyl Rubber	Elongation: 700%
Total Thickness: 28 mils (+/- 2 mils)	Adhesion to steel: 14 oz per inch
Temp. Range: -70°F to 200°F	

Pro® 248 Double Sided Butyl Tape



Pro® 248 is used for waterproofing and noise insulation applications because of its superior durability and excellent cold and heat resistance.

Pro® 248 is ideal for bonding substrates in wet conditions, and general purpose repairs.

Technical Specs

Adhesive: Butyl Rubber	Tensile Strength: 9 lbs per inch
Total Thickness: 20 mils	Adhesion to steel: 87 oz per inch
Temperature Range: Up to 200°F	

Pro® 603 PVC Pipe Wrap Tape (10 mils)



Pro® 603 is a pipe wrap or surface protection tape highly resistant to sun, water, oil, acids and corrosive chemicals while providing electrical protection. Protects joints and conduit coupling for overhead or direct buried applications.

Pro® 603 is flame retardant and resists bacteria and fungus.

Technical Specs

Backing: Plasticized PVC	Tensile Strength: 23 lbs per inch
Adhesive: Rubber Based Adhesive	Elongation: 200%
Total Thickness: 10 mils	Adhesion to steel: 22 oz per inch
Temperature Range: 14°F to 176°F	



WARNING: This product can expose you to chemicals including Diisononyl phthalate (DINP), which is known to the State of California to cause cancer, and Diisodecyl phthalate (DIDP), which is known to the State of California to cause birth defects or other reproductive harm. For more information, go to www.P65Warnings.ca.gov.

Pro® 20 PVC Pipe Wrap Tape (20 mils)



Pro® 20 is typically used as a pipe wrap and surface protection tape. Pro® 20 provides electrical protection, as well as protection for pipe joints, conduit couplings for overhead or direct buried applications. Pro® 20 is an excellent masking tape for hard chrome plating and anodizing.

Technical Specs

Backing: Soft PVC (Polyvinyl Chloride)	Temperature Range: 14°F to 176°F
Adhesive: Rubber Based	Tensile Strength: 32 lbs per inch
Total Thickness: 20.0 mils	Adhesion to steel: 11 oz per inch
Specifications: Flame Resistance: UL510	



WARNING: This product can expose you to chemicals including Diisononyl phthalate (DINP), which is known to the State of California to cause cancer, and Diisodecyl phthalate (DIDP), which is known to the State of California to cause birth defects or other reproductive harm. For more information, go to www.P65Warnings.ca.gov.

Pro® 920 Self-Fusing Silicone Tape



Pro® 920 can be used to weatherproof machinery, color code complex conduit systems, repair and insulate damaged wiring, stop pressurized leaks, and pipe insulation.

Technical Specs

Backing: Silicone Rubber	Temperature Range: -76°F to 500°F
Adhesive: Non-adhesive	Tensile Strength: 700 lbs per inch
Total Thickness: 20.0 mils	Elongation: 300%
Specifications: Meets UL510 Requirements	

Pro® 160 Transparent Waterproof Duct Tape (6 mils)



Pro® 160 can be used in a wide range of sealing, joining and protecting applications. Also used for repairing, binding and hinging.

Technical Specs

Backing: Biaxially oriented polypropylene	Tensile Strength: 36 oz per inch
Adhesive: Acrylic Resin	Elongation: 20%
Total Thickness: 6 mils	Adhesion to steel: 32 oz per inch
Temperature Range: -20°F to 150°F	



Photo: Wide web jumbo roll processing with integrated open core in-line roll wrapping and automated packaging.



Pro® Duct 120

Industrial Grade Duct Tape (10 mils)



Pro® 120 is used for hanging poly sheeting, sealing plastic waste bags, general purpose sealing and repairs.

Technical Specs

Backing: Waterproof, polyethylene film with a cloth carrier	Tensile Strength: 27 lbs per inch
Adhesive: Natural Rubber	Elongation: 17%
Total Thickness: 10 mils	Adhesion to steel: 55 oz per inch
Temperature Range: 50°F to 200°F	Specifications: Tested in accordance with UL723

Pro® 924

Single Coated Polyethylene Tape (7.5 mils)



Common applications for Pro® 924 include: hanging, splicing, seaming and patching of polyethylene sheeting. Multi-purpose sealing, bonding and repair within asbestos/abatement removal applications. General surface protection of a range of materials. Temporary masking. Holding/hanging of sheeting.

Technical Specs

Backing: Polyethylene film	Tensile Strength: 24 lbs per inch
Adhesive: Synthetic rubber	Elongation: 70%
Total Thickness: 7.5 mils	Adhesion to Steel: 75 oz per inch
Temperature Range: 32°F to 160°F	

Pro Gaff®

Premium Cloth Gaffers Tape



Pro Gaff® is a premium gaffers tape that can be used for temporary holding of light fixtures, wire and cable hold down, and marking equipment. Adheres well to wood, glass, concrete and many other substrates and removes without leaving residue.

Technical Specs

Backing: Cotton Cloth	Total Thickness: 11 mils
Adhesive: Synthetic rubber based	Adhesion to steel: 75 oz per in
Tensile strength: 50 lbs per inch	Service Temperature: 50°F to 180°F
Elongation: 4%	

Pro® 931

Single Coated Polyethylene Tape (9 mils)



Common applications for Pro® 931 include: agricultural general purpose repair and protection, wire identification, high durability surface protection, polyethylene splicing. General industrial masking, bundling, splicing and repair applications. All-purpose waterproof sealing applications.

Technical Specs

Backing: Polyethylene film	Tensile Strength: 22 lbs per inch
Adhesive: Synthetic rubber	Elongation: 100%
Total Thickness: 9 mils	Adhesion to steel: 85 oz per inch
Temp. Range: 32°F to 160°F	

Pro® 514

Double Coated Poly Sheeting Tape (9 mils)



Pro® 514 is used for securing tarps or poly sheeting materials to surfaces such as wood, glass, aluminum, plastics, vinyl and painted surfaces.

Pro® 514 is designed to hold materials in place without damaging painted or finished surfaces for 14 days.

Technical Specs

Adhesive: Rubber/Acrylic	Elongation: 7%
Total Thickness: 13.33 mils with liner	
Tensile Strength: 30 lbs per inch	

Pro® Duct 120

Industrial Grade Duct Tape (10 mils)



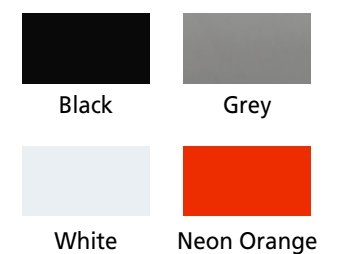
Pro® 120 typical applications include HVAC, industrial, commercial, utilities.

Technical Specs

Backing: Waterproof, polyethylene film with a cloth carrier	Tensile Strength: 27 lbs per inch
Adhesive: Natural rubber	Elongation: 17%
Total Thickness: 10 mils	Adhesion to steel: 55 oz per inch
Temperature Range: 50°F to 200°F	Specifications: Tested in accordance with UL723

Pro® 148

Heavy Duty Duct Tape (17 mils)



Pro® 148 is a 17 mils heavy duty duct tape used for a wide variety of applications; excellent for use on rough or dirty surfaces, and heavy duty repairs that demand an extremely strong hold. All-weather performance, even in cold temperatures.

Technical Specs

Adhesive: Natural rubber	Elongation: 10%
Backing: Waterproof polyethylene film with a cloth carrier	Adhesion to steel: 100 oz per inch
Total Thickness: 17 mils	Temp. Range: 32°F to 200°F
Tensile Strength: 50 lbs per inch	



Pro® Thread Seal Tape

Thread Seal Tape



Pro® Thread Seal Tape can be used on all types of threaded fittings for passage of water potable and non-potable, most chemicals, oxygen, gasoline, natural gas, hydraulic and high-pressure lines.

Technical Specs

Backing: PTFE (polytetrafluoroethylene film)	Temp. Range: -450°F to +500°F
Total Thickness: 3.5 mils	Elongation: 50%
Specifications: Meets MIL-spec T-27730A	

Pro® Scenic 714 Blue Mask

14 Day Painter's Tape



Pro® Scenic 714 Blue Mask is used wherever masking will be exposed to weather/outdoor conditions, interior masking of windows (where adhesive will be directly exposed to sunlight).

Pro® Scenic 714 Blue Mask is compatible for use on lacquer or polyurethane-coated surfaces, unfinished wood, wallpaper and new/unpainted or freshly painted wallboard.

Technical Specs

Backing: Fine structured crepe paper	Tensile Strength: 21 lbs per inch
Adhesive: Synthetic Rubber	Elongation: 7%
Total Thickness: 5.6 mils	Adhesion to steel: 32 oz per inch
Temp. Range: 50°F to 200°F	Specifications: ASTM D6123 / D6123M-97 (2012) Type 1

Pro® 500B

Double Coated Carpet Tape



Pro® 500B is a carpet hold-down tape. Pro® 500B is used for hanging, seaming and poly sheeting.

Technical Specs

Backing: Cloth	Temp. Range: up to 200°F
Adhesive: Rubber	Tensile Strength: 20 lbs per inch
Total Thickness: 11 mils	Adhesion to steel: 40 oz per inch
Specifications: Boeing BAC5034-4 Section 5.1.a (1)(a); BAC-5317 Rev F	

Pro® 822

Floor Protection Tape



Pro® 822 is a polyethylene film coated with an inert water-based acrylic adhesive. The product is reverse wound and can be easily applied by hand or with an applicator.

This temporary floor protection film provides protection during painting, remodeling, relocations or other high traffic situations. The many variations in floor materials; wood, natural stone, ceramics, etc. and the finishing techniques for each, make it imperative that the user determines its suitability.

Technical Specs

Backing: Polypropylene film	Tensile Strength: 11 lbs per inch
Adhesive: Water-based acrylic adhesive	Adhesion to steel: 2.0 - 4.5 oz per inch
Total Thickness: 3 mils	

Pro® 788 Ultimate Masking Tape

60 Day Premium Painter's Tape



Pro® 788 Ultimate Masking Tape is a professional 60 day painter's tape with a flat, smooth backing specifically designed for use where UV resistance and clean removal are required.

Pro® 788 Ultimate Masking Tape is excellent for use in surface sensitive applications such as painted drywall.

Technical Specs

Backing: Smooth Paper	Tensile Strength: 23 lbs per inch
Adhesive: Acrylic	Elongation: 4.5%
Total Thickness: 3.6 mils	Adhesion to steel: 14 oz per inch
Temperature Range: 180°F for 30 minutes	

Pro® 795

General Purpose Masking Tape



Pro® 795 provides excellent adhesion to a wide variety of surfaces in a number of fields including light bundling, light duty masking, and packaging or sealing.

Technical Specs

Backing: Crepe paper	Tensile Strength: 18 lbs per inch
Adhesive: Synthetic Rubber	Elongation: 7%
Total Thickness: 4.6 mils	Adhesion to steel: 30 oz per inch
Temp. Range: 60°F to 150°F	

Pro® 888C

Carpet Protection Tape



Pro® 888C is a clear co-extruded multi-polymer film coated with a very high-tack acrylic adhesive system designed especially to help provide temporary protection of carpets, fabric interiors and carpeted door panels. Lies flat and creates a secure bond while still allowing for removability without tearing or silvering.

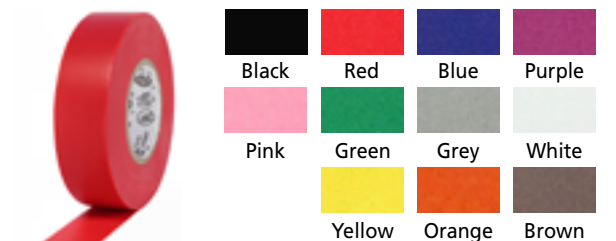
Pro® 888C is recommended for temporary protection of carpet and fabric made from synthetic fibers. Users should determine if suitable for specific application.

Technical Specs

Backing: Co-extruded multi-polymer	Tensile Strength: 11 lbs per inch
Adhesive: Acrylic	Elongation: 630%
Total Thickness: 3 mils	

Pro® Plus

Electrical Tape



Pro® Plus is a vinyl plastic insulating tape. Pro® Plus is typically used in insulating wire splices, harness wrapping and general industrial maintenance.

Technical Specs

Backing: Vinyl film	Tensile Strength: Range: 16 - 20 lbs per inch
Adhesive: Rubber based	Elongation: 200%
Total Thickness: 7 mils	Adhesion to steel: 11.7 oz to 14.3 oz per inch



WARNING: This product can expose you to chemicals including Diisononyl phthalate (DINP), which is known to the State of California to cause cancer, and Diisodecyl phthalate (DIDP), which is known to the State of California to cause birth defects or other reproductive harm. For more information, go to www.P65Warnings.ca.gov.



Pro® P-28 Boxed Electrical Tape



Pro® P-28 is typically used for insulating wire splices, harness wrapping and general industrial maintenance.

Technical Specs

Backing: Vinyl film	Tensile Strength: 20 lbs per inch
Adhesive: Rubber based	Elongation: 200%
Total Thickness: 7 mils	Adhesion to steel: 11.7 oz to 14.3 oz per inch



WARNING: This product can expose you to chemicals including Diisononyl phthalate (DINP), which is known to the State of California to cause cancer, and Diisodecyl phthalate (DIDP), which is known to the State of California to cause birth defects or other reproductive harm. For more information, go to www.P65Warnings.ca.gov.

Pro® Friction Tape Friction Abrasion Protection Tape



Pro® Friction is a general purpose tape that provides excellent protection against abrasion. Pro® Friction is ideal for use as a heavy duty binding and harnessing tape because of its high break strength and low stretch. Pro® Friction can also be applied over tool handles for non-slip grip.

Technical Specs

Adhesive: Rubber coated both sides	Tensile Strength: 48 lbs per inch
Total Thickness: 13 mils	Adhesion to steel: 40 oz per inch
Temperature Range: up to 176°F (80°C)	

Caution Ribbon Non-Adhesive Caution Ribbon



Yellow Printed Black

Pro® Caution Ribbon is ideal for crime and fire scenes, construction sites, roadwork areas, sporting venues, and any place where crowd control is required.

Technical Specs

Adhesive: Non-adhesive	
Total Thickness: 3 mils	
Elongation: 400%	

FLEXO PRINTING

- Up to 3 colors, repeats up to one meter, [39.37"]
- Substrate can be one color plus three color print (4 color)
- Ability to print & die-cut in-line one pass
- Web width up to 300mm
- 1", 1 1/2" and 3" ID finished roll core capability

FLATBED DIE-CUTTING

- Can process thicker and larger parts
- Processing of thicker Volara® foams for medical use
- 12" x 12" die dimensions / steel rule tooling

ROTARY DIE-CUTTING

- Repeats lengths from 6" up to 39.37"
- Can be processed in roll form or individual parts for more efficient customer use
- Faster processing, more cost effective
- Parts and liners can be printed as well as die-cut
- Laminate up to 4 materials in-line and multi-layer cut
- Web widths up to 300mm
- Waste / scrap ejection
- Solid dies, flexible dies, floating dies, vacuum and air ejection

LAMINATING

- Wide web laminating up to three substrates 1800mm wide with full capabilities to slit or log finished product inline
- Narrow web laminating up to five substrates 300mm wide with full capabilities to slit, die cut or print product inline
- Capable of adding adhesive or release liners to a wide range of substrates up to 6mm in thickness

COMPLIANCES, CERTIFICATIONS & SPECIFICATIONS

- FDA Registered #3012336447
- GS1 Registered (UPC Barcoding)
- IMDS (Material System Data) Registered
- ISO 9001 Certified
- EDI Compliant
- QC Documentation Available
- Military Specifications
- Government Specifications
- Contract Bids

PACKAGING & FINISHING SOLUTIONS

- Fully automatic in-line roll wrapping
- Clear & printed sleeve wrapping
- Open and closed core shrink wrapping
- PSA roll labeling, in-line
- Robotic case packing
- Bulk pack with silicone
- Poly and zip lock bagging
- Sleeve, single tower and accordion style wrapping
- Blister and clam shell display packs
- Core labeling sticker
- Private label branding
- In-house design and support
- Custom designs: core, boxes, sleeves, shrink wrap, roll label
- Custom packaging configurations available
- Retail ready packaging



Closed Core Shrink Wrap with Roll Label



Accordion Style Wrapping



Polybag with Hang Tab



Open Core Shrink Wrap with Halfmoon Roll Label & UPC Barcode



Clamshell Packaging with Hang Tab & UPC Barcode



Envelope Packaging with Hang Tab & UPC Barcode



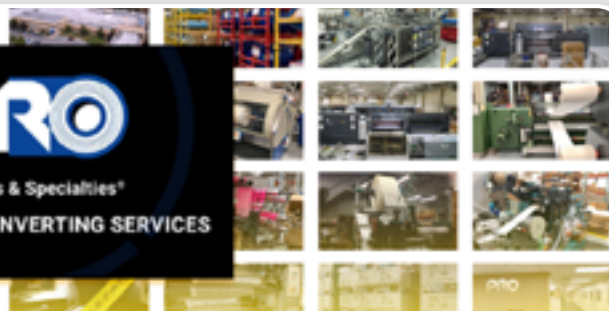
WHO WE ARE

Pro Tapes & Specialties, Inc.® offers a large selection of tape products engineered for high performance in demanding applications associated with the building and construction market place. Contractors, engineers, architects & builders have come to rely on Pro Tapes® for application solutions.

Whether it's flashing tapes, vapor barrier & seaming tapes, or any high performance adhesive tape needed for roofing, flooring, or window installation, we have the solutions to your building and construction projects! Besides the Pro Tapes® line of products, we offer products from all of the major tape manufacturers such as Nitto Denko, 3M, Tesa, Shurtape®, Intertape Polymer Group and more.

VIRTUAL TOUR

See our state-of-the-art facility and discover our converting capabilities:
protapes.com/tour



WHY PARTNER WITH PRO TAPES®?

- 1** ***We've Invested To Be Cutting Edge.***
We've made substantial investments in fully-automated technology to be a leader in the converting and packaging of pressure sensitive adhesives.
- 2** ***Your Global Solutions Provider.***
We have a solution for all your tape needs, such as advanced converting services, new product development, custom die-cutting, product finishing or packaging configurations and procurement or inventory management.
- 3** ***Technical Support from Experienced Staff.***
Our experienced product specialists are the most knowledgeable in the industry and can assist in application support and strategize on how to improve product quality and performance.
- 4** ***Held to the Highest Standards.***
We follow all industry best practices and are certified in ISO 9001 Standards, FDA Registered, GS1 Registered, IMDS Registered and EDI Compliant.

INDUSTRIES SERVED

ROOFING • GUTTERS • WINDOWS • DOORS • DECKING • HVAC • PLUMBING • ELECTRICAL • FLOORING
SHEATHING • MOISTURE MANAGEMENT • GENERAL CONSTRUCTION • PAINTING • DRYWALL • FRAMING
INSULATION • POOLS • SPA • ABATEMENT • AND MORE!

Pro Tapes & Specialties, Inc.®
621 Route 1 South
North Brunswick, NJ 08902

Toll Free: (800) 345-0234
Email: sales@protapes.com
www.protapes.com